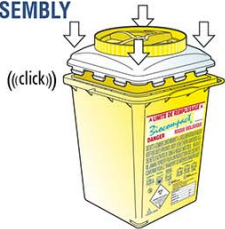


Ziocompact



ASSEMBLY



Align lid with container.
Press hard over the corners of the container until you hear the "clicks"

OPENING



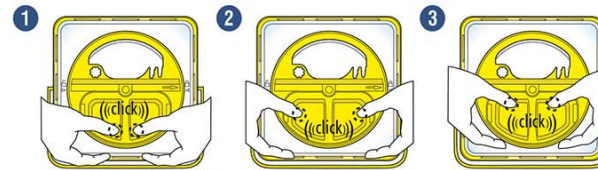
Turn the circular part of the lid clockwise until you hear "click"

PRE-CLOSURE



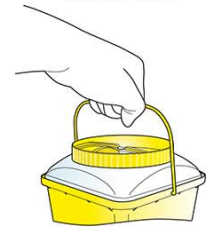
Provisional closure is achieved by turning the circular part of the lid anticlockwise until you hear "click"

FINAL CLOSURE



To achieve final closure, check that the lid is fully turned anticlockwise until you hear the "click" indicating that the provisional closure position has been reached. Then press all the perimeter of the yellow tab until "clicks" are heard

TRANSPORT

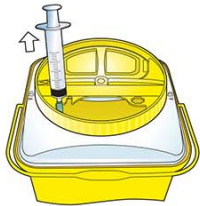


Once the container has been definitively closed, it can be transported using its handle

REMOVAL OF MATERIAL

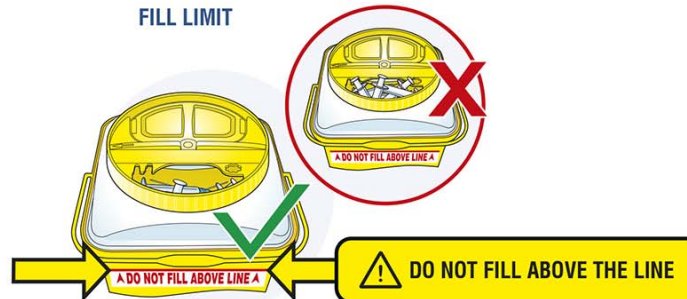


For correct extraction, open the lid fully until you hear "click"



Extraction system for needles and utensils

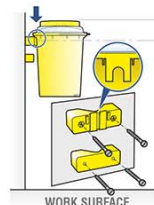
FILL LIMIT



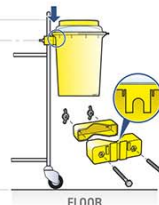
MANDATORY SUPPORT TABLE HOLDER



WALL BRACKET



BAR BRACKET



ACCESSORIES - TRAY



BIOLOGICAL RISK

CONFORMS WITH NORMS NFX 30-511 AND ISO23907: 2012
AGREEMENT FOR THE TRANSPORTATION OF DANGEROUS MATERIAL
ATTENTION: DO NOT FORCE THE INSERTION OF WASTE
WASTE TO BE ELIMINATED ACCORDING TO REGULATIONS IN FORCE
AUTOCLAVABLE AT 121°C FOR 20 MINS. BEFORE USE